



## Office Building

## Luminaire list

$\Phi_{\text{total}}$ 117440 lm	$P_{\text{total}}$ 1632.2 W	Luminous efficacy 72.0 lm/W
------------------------------------	--------------------------------	--------------------------------

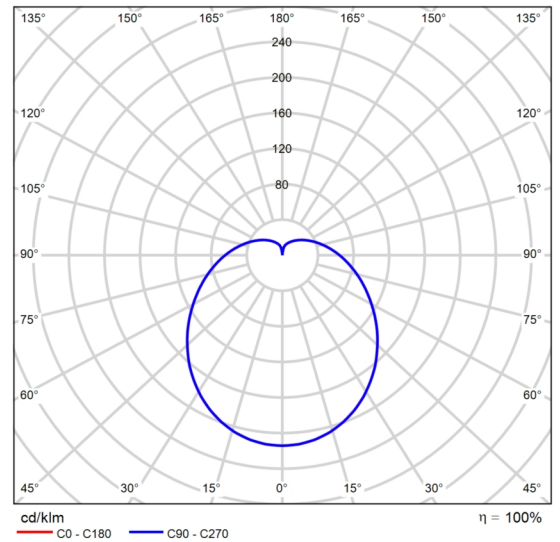
pcs.	Manufacturer	Article No.	Article name	P	$\Phi$	Luminous efficacy
8	Justice Design		POR-8802-WAVE	4.5 W	480 lm	106.6 lm/W
6	Lithonia Lighting	LTHSPLT MR16GU1 0 LED 27K BN M4	Brushed Nickel Spot Light Track Head, MR16GU10 2700K LED Lamp Included	10.0 W	690 lm	69.0 lm/W
3	Nora Lighting		NOXTW-5631WW 4000K	15.4 W	1132 lm	73.7 lm/W
4	Studio 350		16" diameter pendant light	4.5 W	480 lm	106.6 lm/W
92	USA Illumination, Inc	B4RD- 33C3- 30KS-90-S- WH MOD to 16W, 40KS	Formed steel housing, white reflector with frosted diffuse r, glass lens with white trim	16.0 W	1132 lm	70.7 lm/W

## Product data sheet

Justice Design - POR-8802-WAVE



P	4.5 W
$\Phi_{\text{Lamp}}$	480 lm
$\Phi_{\text{Luminaire}}$	480 lm
$\eta$	99.95 %
Luminous efficacy	106.6 lm/W
CCT	3000 K
CRI	100



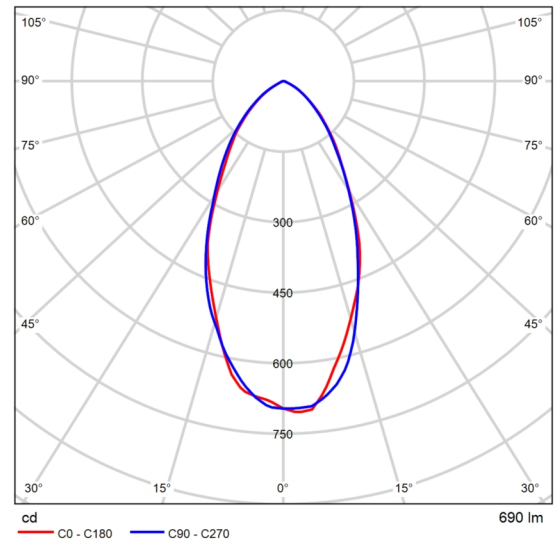
Polar LDC

## Product data sheet

Lithonia Lighting - Brushed Nickel Spot Light Track Head, MR16GU10 2700K LED Lamp Included



Article No.	LTHSPLT MR16GU10 LED 27K BN M4
P	10.0 W
$\Phi_{\text{Lamp}}$	-
$\Phi_{\text{Luminaire}}$	690 lm
$\eta$	-
Luminous efficacy	69.0 lm/W
CCT	3000 K
CRI	100



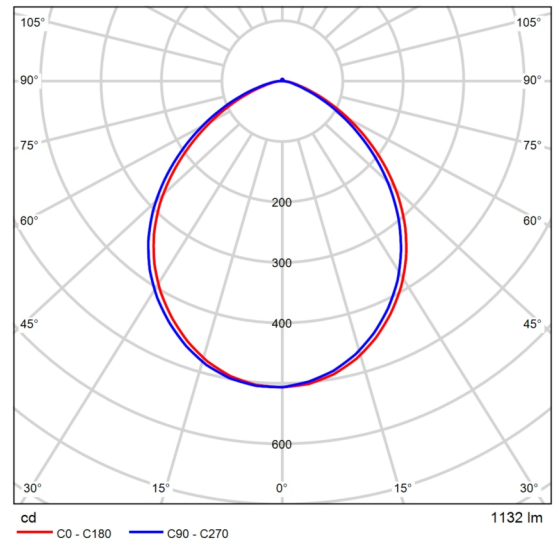
Polar LDC

## Product data sheet

Nora Lighting - NOXTW-5631WW 4000K



P	15.4 W
$\Phi_{\text{Lamp}}$	-
$\Phi_{\text{Luminaire}}$	1132 lm
$\eta$	-
Luminous efficacy	73.7 lm/W
CCT	3000 K
CRI	100



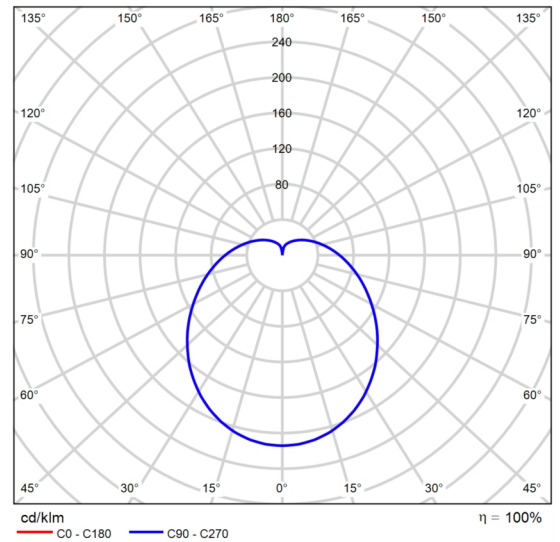
Polar LDC

## Product data sheet

Studio 350 - 16" diameter pendant light



P	4.5 W
$\Phi_{Lamp}$	480 lm
$\Phi_{Luminaire}$	480 lm
$\eta$	99.95 %
Luminous efficacy	106.6 lm/W
CCT	3000 K
CRI	100



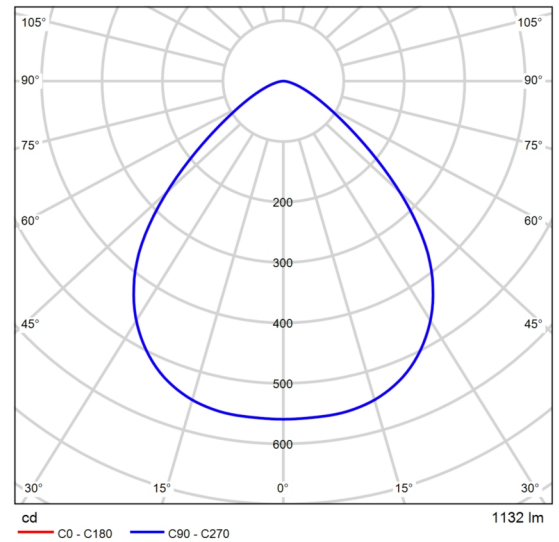
Polar LDC

## Product data sheet

USA Illumination, Inc - Formed steel housing, white reflector with frosted diffuse r, glass lens with white trim



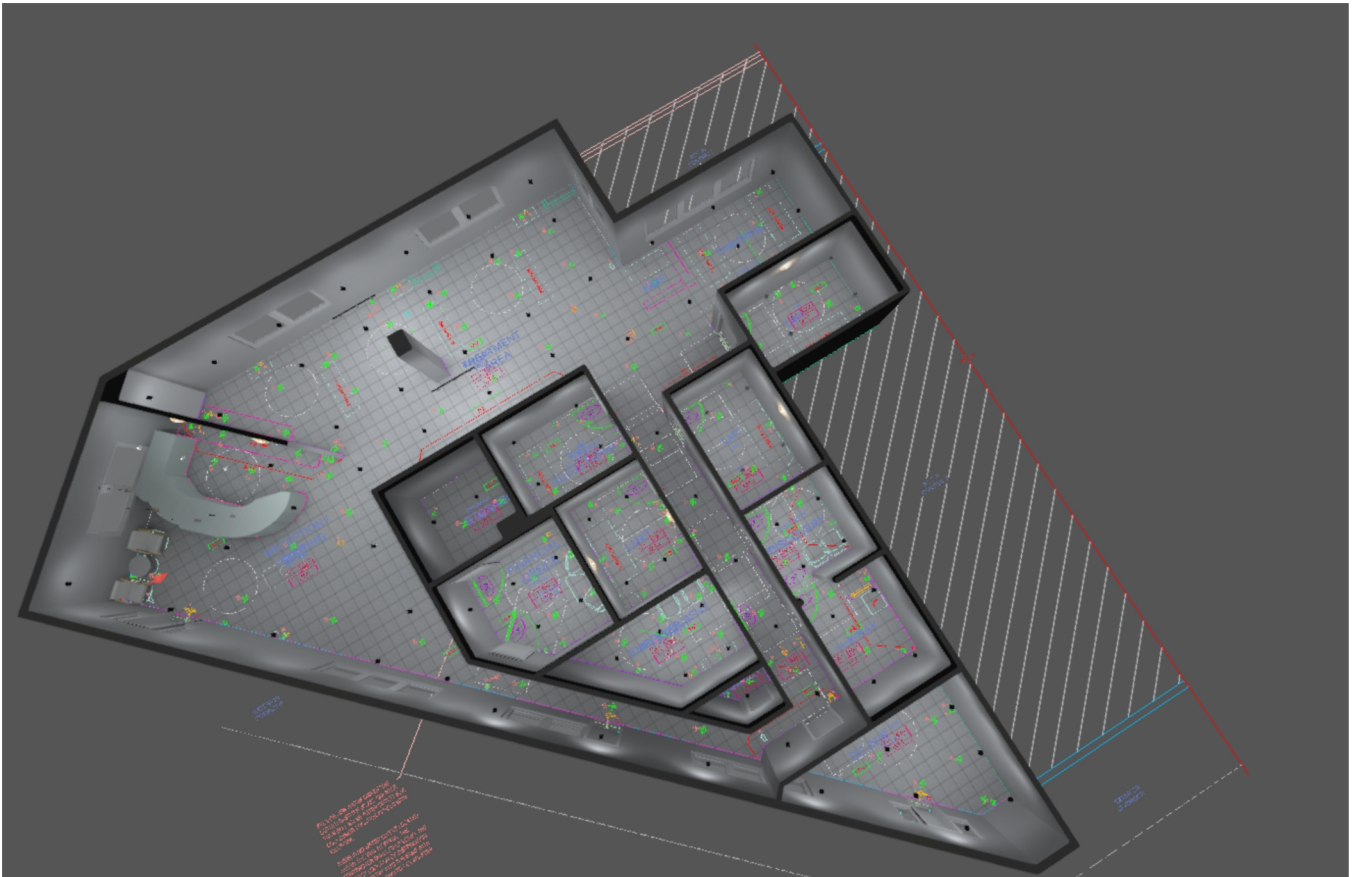
Article No.	B4RD-33C3-30KS-90-S-WH MOD to 16W, 40KS
P	16.0 W
$\Phi_{\text{Lamp}}$	-
$\Phi_{\text{Luminaire}}$	1132 lm
$\eta$	-
Luminous efficacy	70.7 lm/W
CCT	3000 K
CRI	100



Polar LDC

Building 1 · Storey 1

## Images



Storey 1 (36)



Building 1 · Storey 1

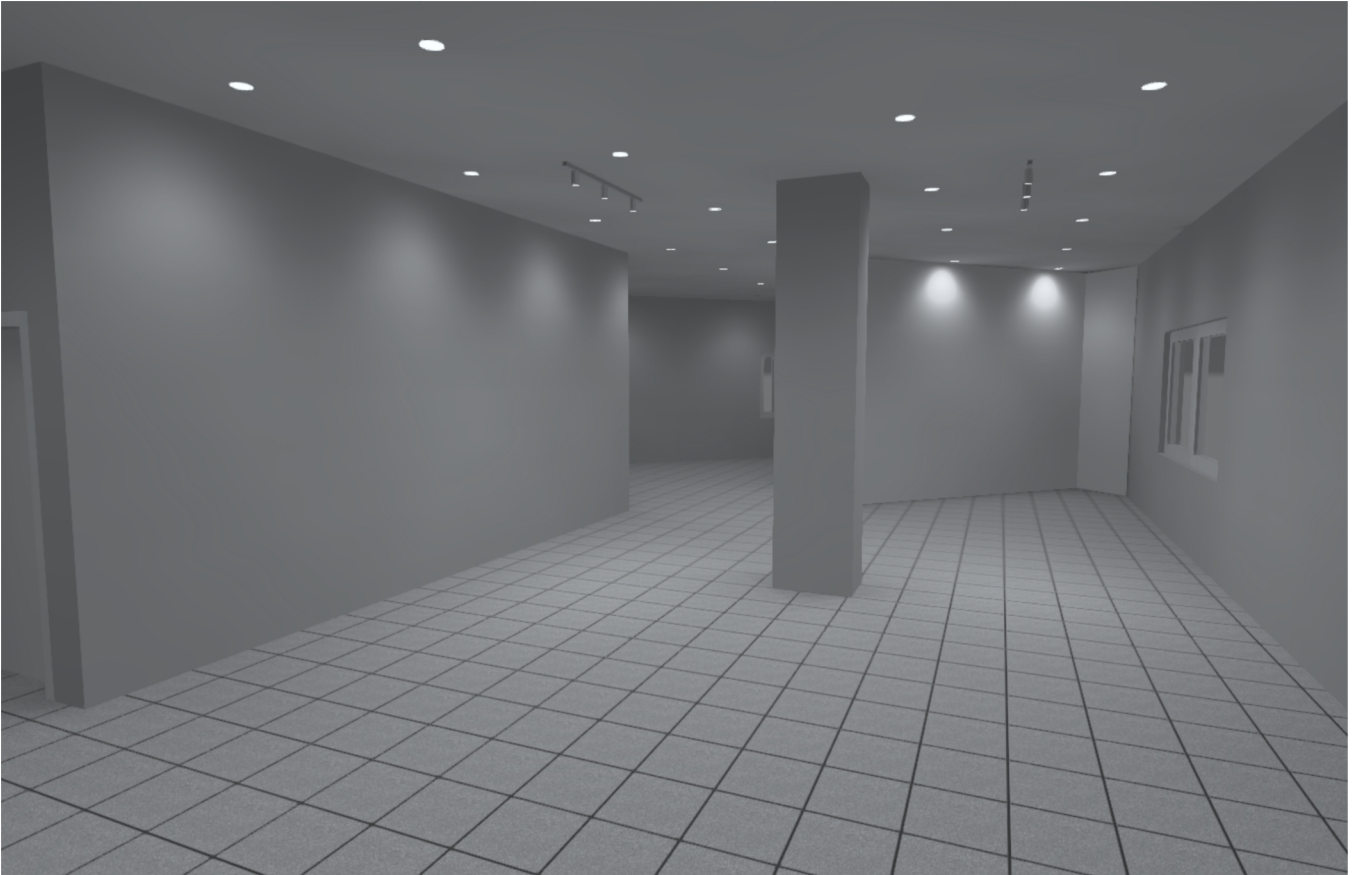
## Images



Storey 1 (37)

Building 1 · Storey 1

## Images



Storey 1 (38)

Building 1 · Storey 1

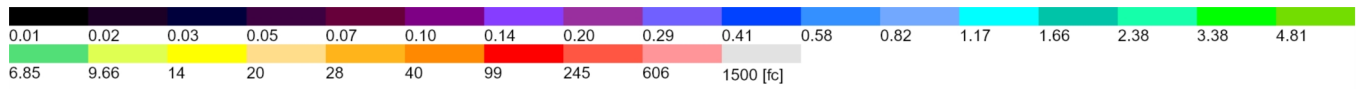
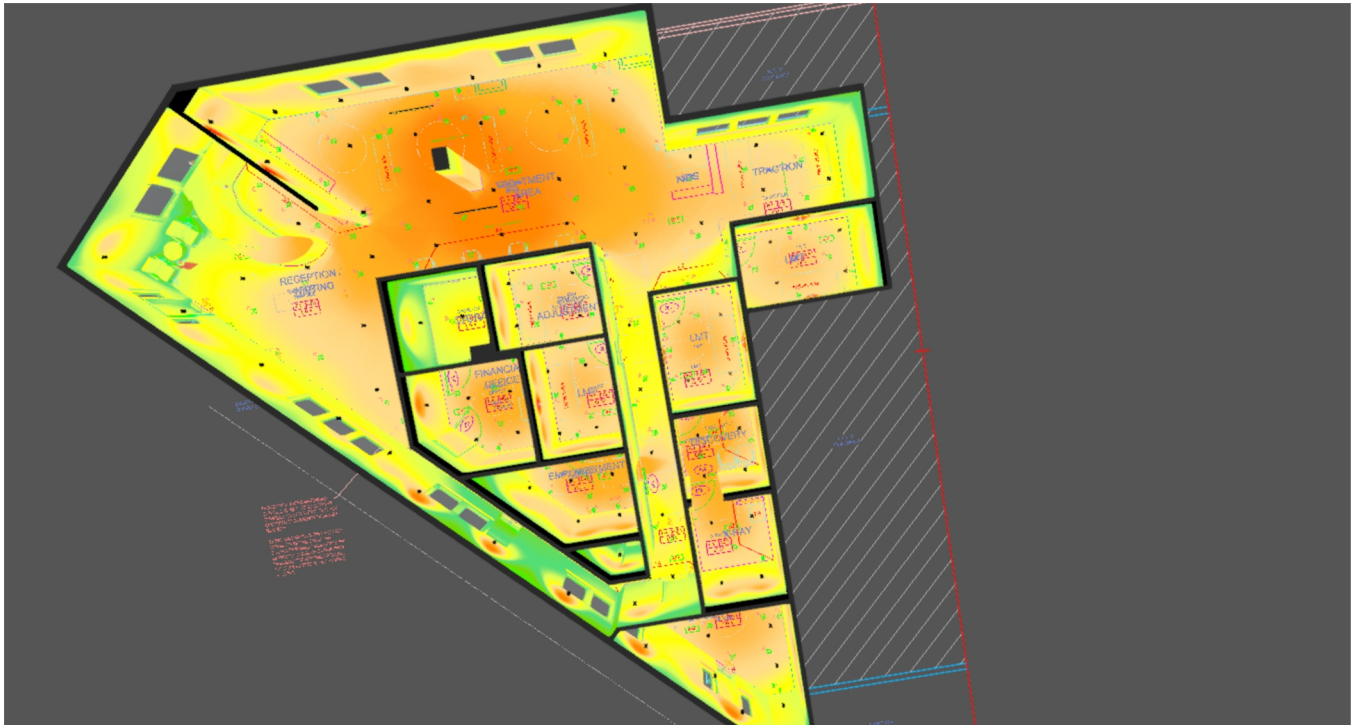
## Images



Storey 1 (41)

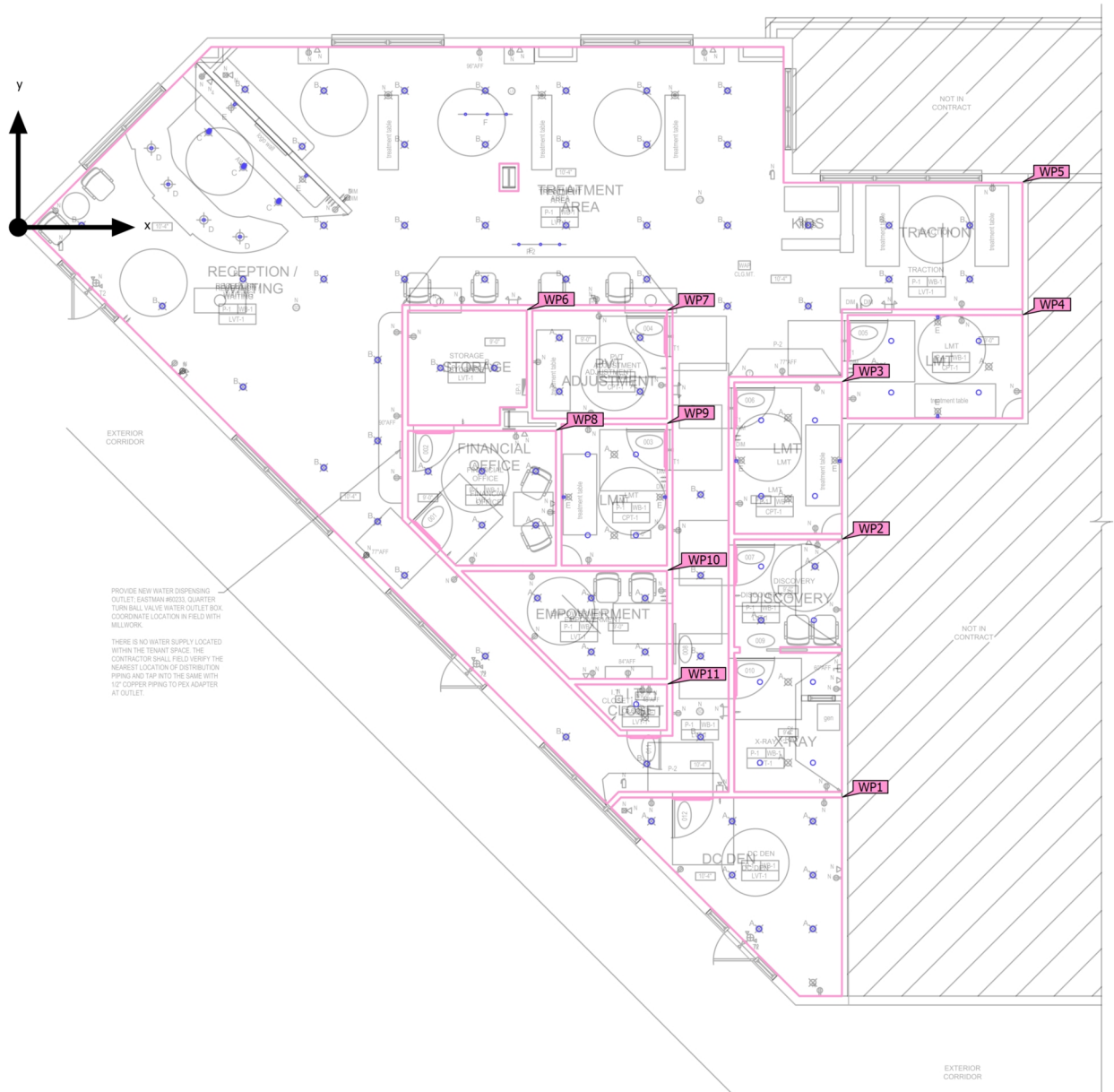
Building 1 · Storey 1

Images



Storey 1 (35)

Building 1 · Storey 1 (Light scene 1)  
**Calculation objects**



## Building 1 · Storey 1 (Light scene 1)

**Calculation objects**

## Working planes

Properties	$\bar{E}$ (Target)	$E_{min}$	$E_{max}$	$\bar{E}/E_{min}$ (Target)	$E_{max}/E_{min}$	Index
Working plane (DC Den) Perpendicular illuminance (adaptive) Height: 2.493 ft, Wall zone: 0.000 ft	29.3 fc ( $\geq 27.9$ fc) ✓	13.2 fc	38.6 fc	2.23 ( $\leq -$ ) ✓	2.93	WP1
Working plane (Discovery & X-Ray) Perpendicular illuminance (adaptive) Height: 2.493 ft, Wall zone: 0.000 ft	35.2 fc ( $\geq 27.9$ fc) ✓	14.7 fc	47.1 fc	2.39 ( $\leq -$ ) ✓	3.20	WP2
Working plane (LMT) Perpendicular illuminance (adaptive) Height: 2.493 ft, Wall zone: 0.000 ft	31.8 fc ( $\geq 27.9$ fc) ✓	12.0 fc	39.8 fc	2.64 ( $\leq -$ ) ✓	3.31	WP3
Working plane (LMT) Perpendicular illuminance (adaptive) Height: 2.493 ft, Wall zone: 0.000 ft	29.6 fc ( $\geq 27.9$ fc) ✓	9.90 fc	36.3 fc	2.99 ( $\leq -$ ) ✓	3.66	WP4
Working plane (Reception - Treatment - Tranction) Perpendicular illuminance (adaptive) Height: 2.493 ft, Wall zone: 0.000 ft	28.8 fc ( $\geq 27.9$ fc) ✓	0.072 fc	70.0 fc	401 ( $\leq -$ ) ✓	975	WP5
Working plane (Storage) Perpendicular illuminance (adaptive) Height: 0.000 ft, Wall zone: 0.000 ft	13.7 fc ( $\geq 4.64$ fc) ✓	10.5 fc	16.2 fc	1.30 ( $\leq 5.00$ ) ✓	1.53	WP6
Working plane (PVT Adjustment) Perpendicular illuminance (adaptive) Height: 2.493 ft, Wall zone: 0.000 ft	30.8 fc ( $\geq 27.9$ fc) ✓	9.77 fc	36.6 fc	3.15 ( $\leq -$ ) ✓	3.74	WP7
Working plane (Financial Office) Perpendicular illuminance (adaptive) Height: 2.493 ft, Wall zone: 0.000 ft	34.9 fc ( $\geq 27.9$ fc) ✓	8.71 fc	46.3 fc	4.01 ( $\leq -$ ) ✓	5.31	WP8
Working plane (LMT) Perpendicular illuminance (adaptive) Height: 2.493 ft, Wall zone: 0.000 ft	32.2 fc ( $\geq 27.9$ fc) ✓	12.4 fc	38.8 fc	2.60 ( $\leq -$ ) ✓	3.13	WP9
Working plane (Empowerment) Perpendicular illuminance (adaptive) Height: 2.493 ft, Wall zone: 0.000 ft	35.9 fc ( $\geq 27.9$ fc) ✓	11.8 fc	46.5 fc	3.04 ( $\leq -$ ) ✓	3.94	WP10

Building 1 · Storey 1 (Light scene 1)

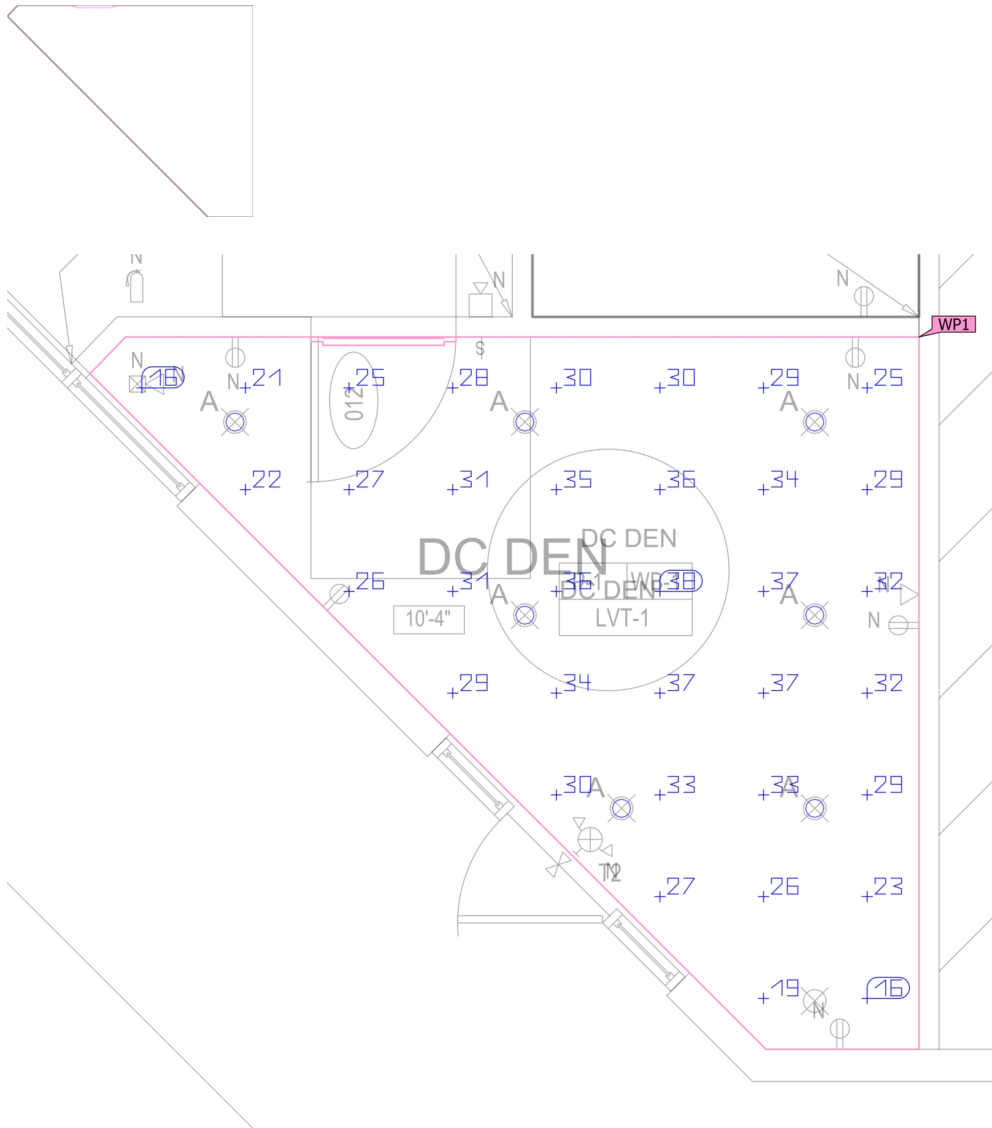
### Calculation objects

Working plane (Closet)	9.87 fc	8.14 fc	10.5 fc	1.21	1.29	WP11
Perpendicular illuminance (adaptive)	( $\geq 4.64$ fc)			( $\leq 5.00$ )		
Height: 0.000 ft, Wall zone: 0.000 ft	✓			✓		

---

Building 1 · Storey 1 · DC Den (Light scene 1)

### Working plane (DC Den)

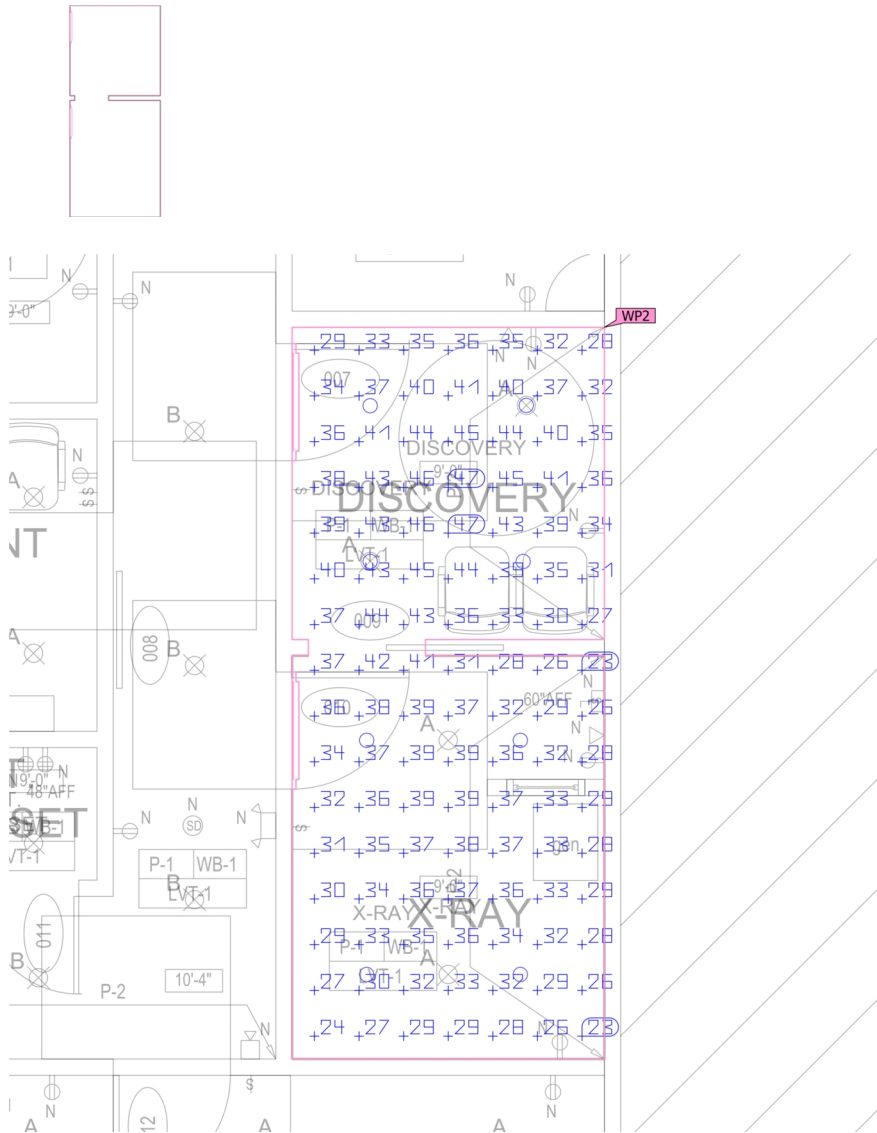


Properties	$\bar{E}$ (Target)	$E_{min}$	$E_{max}$	$\bar{E}/E_{min}$ (Target)	$E_{max}/E_{min}$	Index
Working plane (DC Den) Perpendicular illuminance (adaptive) Height: 2.493 ft, Wall zone: 0.000 ft	29.3 fc ( $\geq 27.9$ fc) ✓	13.2 fc	38.6 fc	2.23 ( $\leq -$ ) ✓	2.93	WP1

Utilisation profile: DIALux preset (Default (Office))



Building 1 · Storey 1 · Discovery & X-Ray (Light scene 1)  
**Working plane (Discovery & X-Ray)**

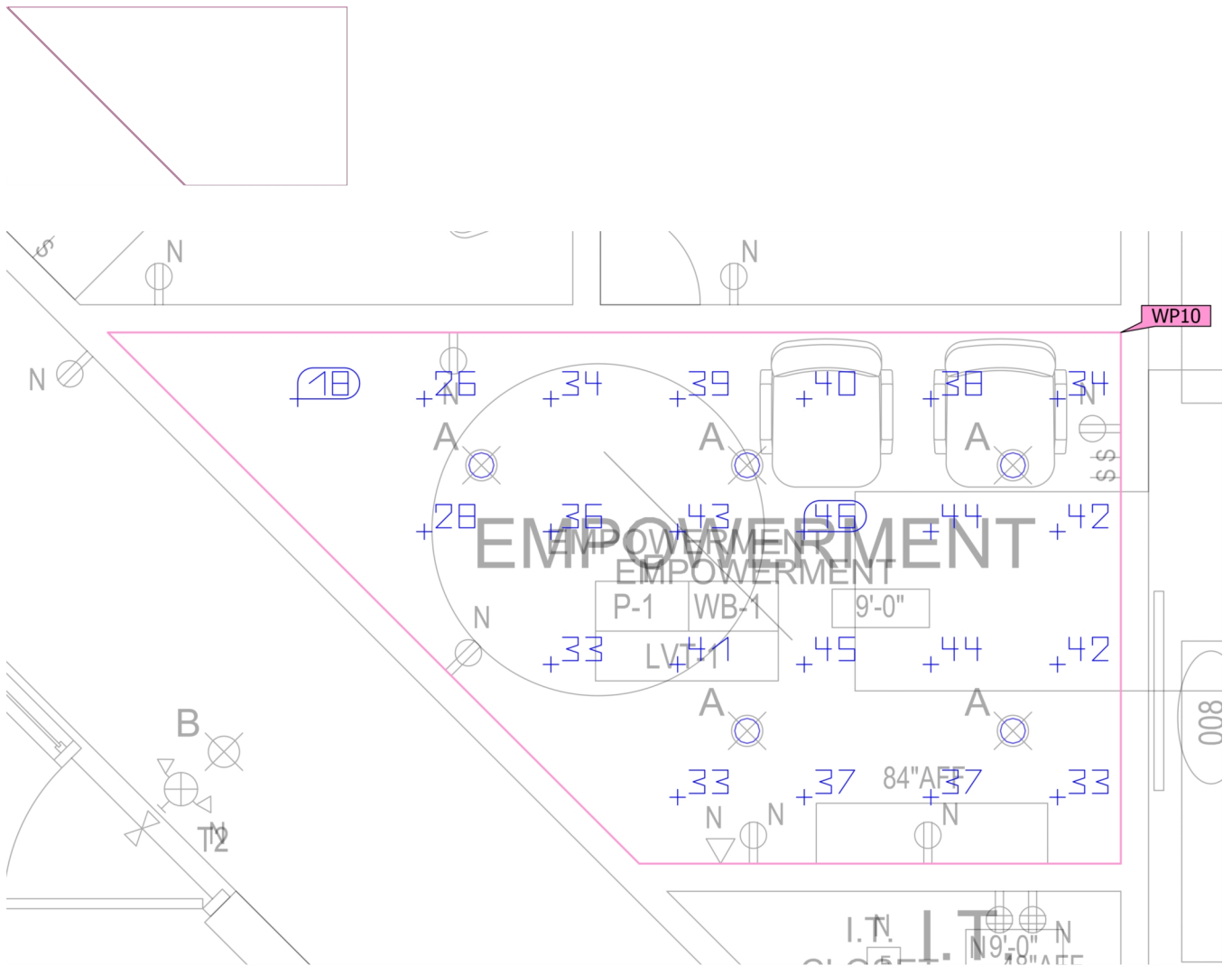


Properties	$\bar{E}$ (Target)	$E_{min}$	$E_{max}$	$\bar{E}/E_{min}$ (Target)	$E_{max}/E_{min}$	Index
Working plane (Discovery & X-Ray) Perpendicular illuminance (adaptive) Height: 2.493 ft, Wall zone: 0.000 ft	35.2 fc ( $\geq 27.9$ fc)	14.7 fc	47.1 fc	2.39 ( $\leq -$ )	3.20	WP2

Utilisation profile: DIALux preset (Default (Office))

Building 1 · Storey 1 · Empowerment (Light scene 1)

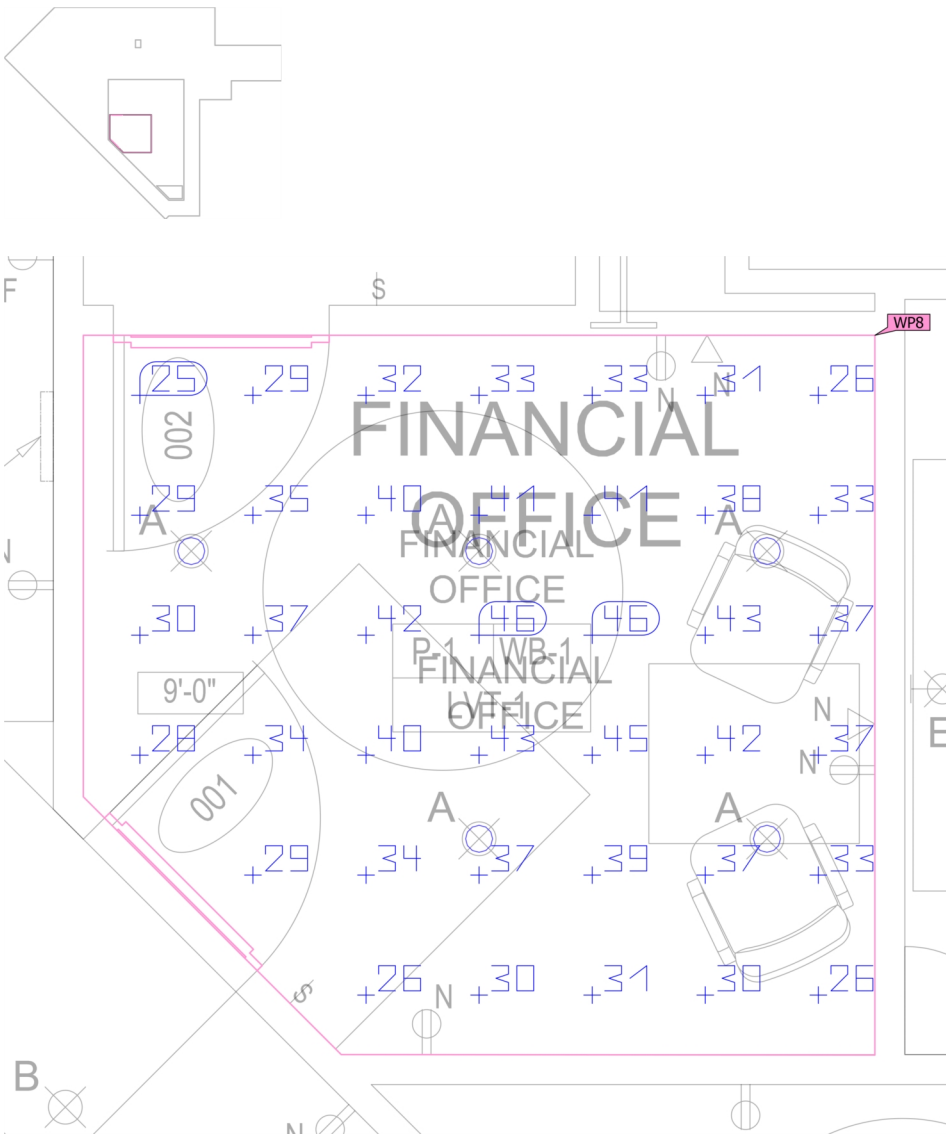
### Working plane (Empowerment)



Properties	$\bar{E}$ (Target)	$E_{min}$	$E_{max}$	$\bar{E}/E_{min}$ (Target)	$E_{max}/E_{min}$	Index
Working plane (Empowerment) Perpendicular illuminance (adaptive) Height: 2.493 ft, Wall zone: 0.000 ft	35.9 fc (≥ 27.9 fc) ✓	11.8 fc	46.5 fc	3.04 (≤ -) ✓	3.94	WP10

Utilisation profile: DIALux preset (Default (Office))

Building 1 · Storey 1 · Financial Office (Light scene 1)  
**Working plane (Financial Office)**

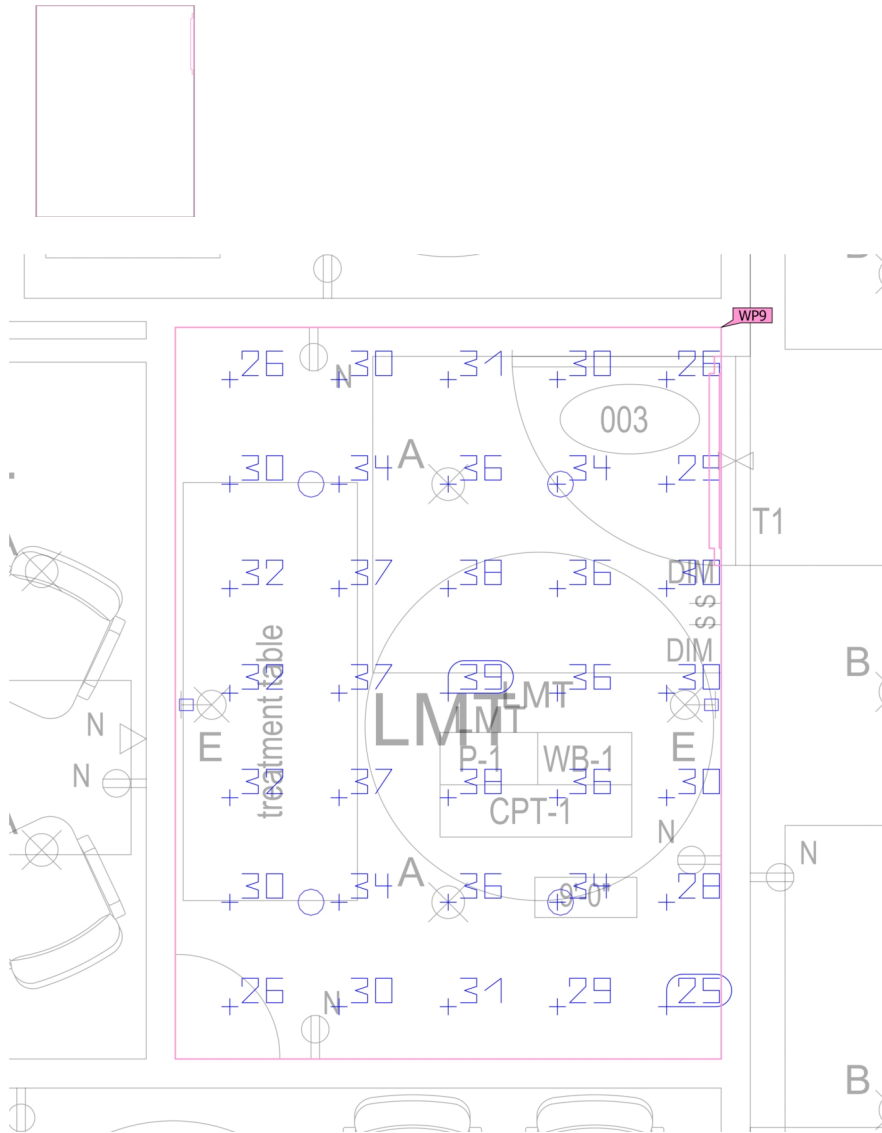


Properties	$\bar{E}$ (Target)	$E_{min}$	$E_{max}$	$\bar{E}/E_{min}$ (Target)	$E_{max}/E_{min}$	Index
Working plane (Financial Office) Perpendicular illuminance (adaptive) Height: 2.493 ft, Wall zone: 0.000 ft	34.9 fc ( $\geq 27.9$ fc)	8.71 fc	46.3 fc	4.01 ( $\leq -$ )	5.31	WP8

Utilisation profile: DIALux preset (Default (Office))

Building 1 · Storey 1 · LMT (Light scene 1)

### Working plane (LMT)

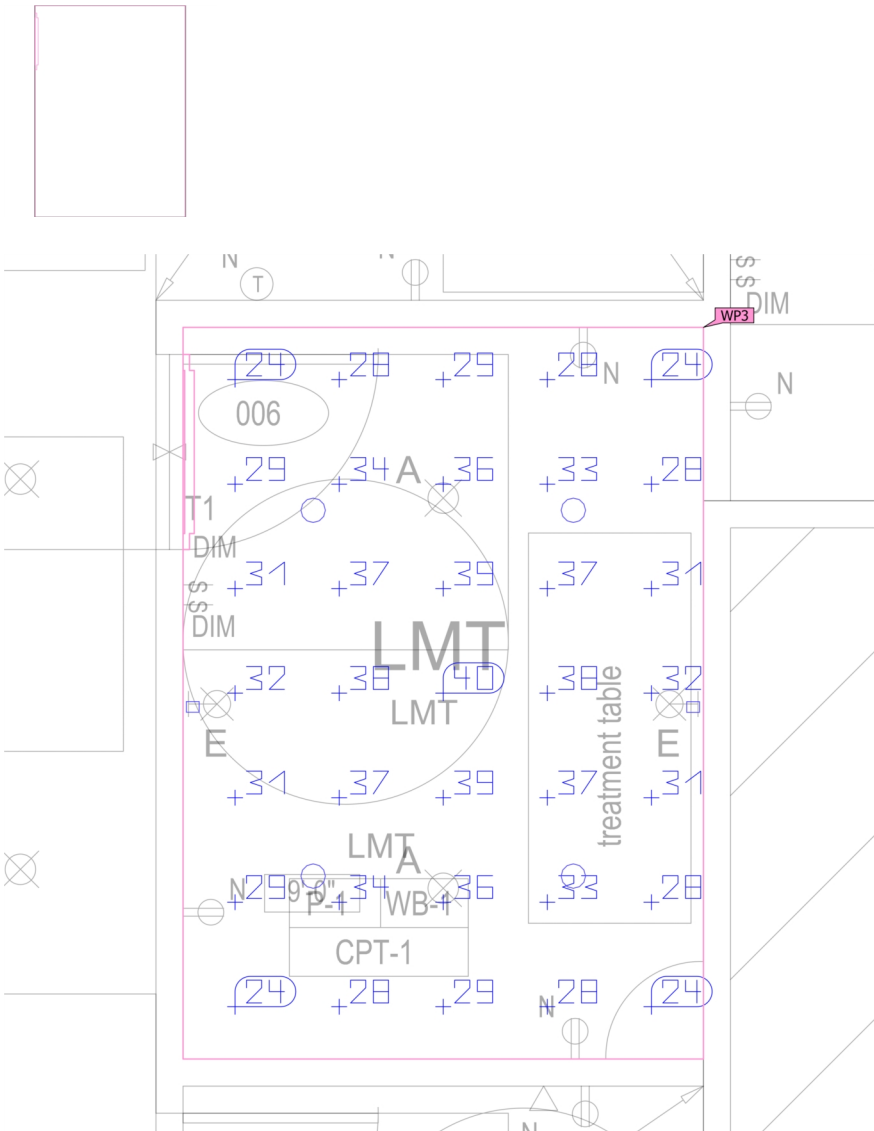


Properties	$\bar{E}$ (Target)	$E_{min}$	$E_{max}$	$\bar{E}/E_{min}$ (Target)	$E_{max}/E_{min}$	Index
Working plane (LMT) Perpendicular illuminance (adaptive) Height: 2.493 ft, Wall zone: 0.000 ft	32.2 fc ( $\geq 27.9$ fc) ✓	12.4 fc	38.8 fc	2.60 ( $\leq -$ ) ✓	3.13	WP9

Utilisation profile: DIALux preset (Default (Office))

Building 1 · Storey 1 · LMT (Light scene 1)

### Working plane (LMT)



Properties	$\bar{E}$ (Target)	$E_{min}$	$E_{max}$	$\bar{E}/E_{min}$ (Target)	$E_{max}/E_{min}$	Index
Working plane (LMT) Perpendicular illuminance (adaptive) Height: 2.493 ft, Wall zone: 0.000 ft	31.8 fc ( $\geq 27.9$ fc)	12.0 fc	39.8 fc	2.64 ( $\leq -$ )	3.31	WP3
	✓			✓		

Utilisation profile: DIALux preset (Default (Office))

Building 1 · Storey 1 · LMT (Light scene 1)  
**Working plane (LMT)**

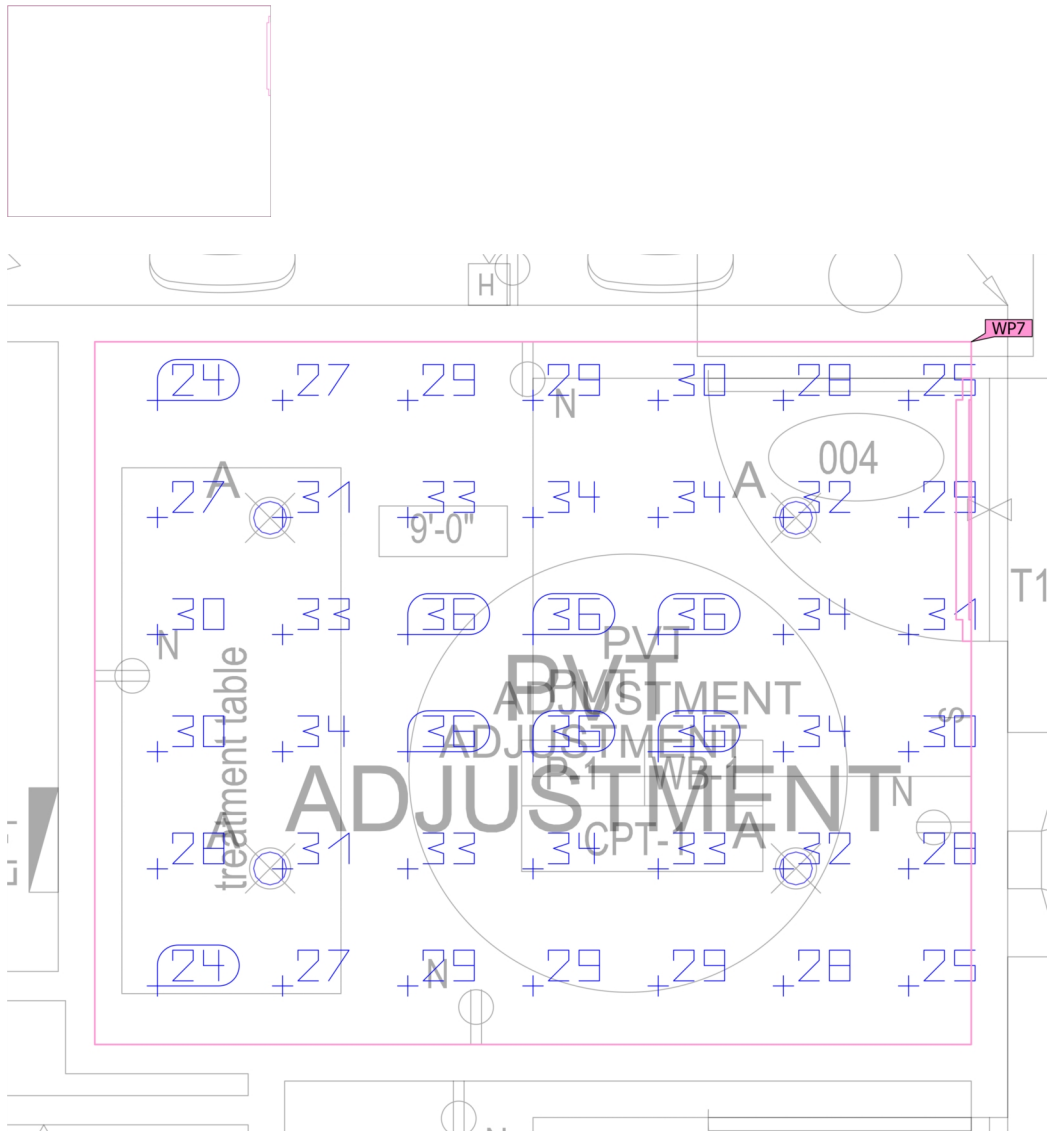


Properties	$\bar{E}$ (Target)	$E_{min}$	$E_{max}$	$\bar{E}/E_{min}$ (Target)	$E_{max}/E_{min}$	Index
Working plane (LMT) Perpendicular illuminance (adaptive) Height: 2.493 ft, Wall zone: 0.000 ft	29.6 fc ( $\geq 27.9$ fc)	9.90 fc	36.3 fc	2.99 ( $\leq -$ )	3.66	WP4

Utilisation profile: DIALux preset (Default (Office))

Building 1 · Storey 1 · PVT Adjustment (Light scene 1)

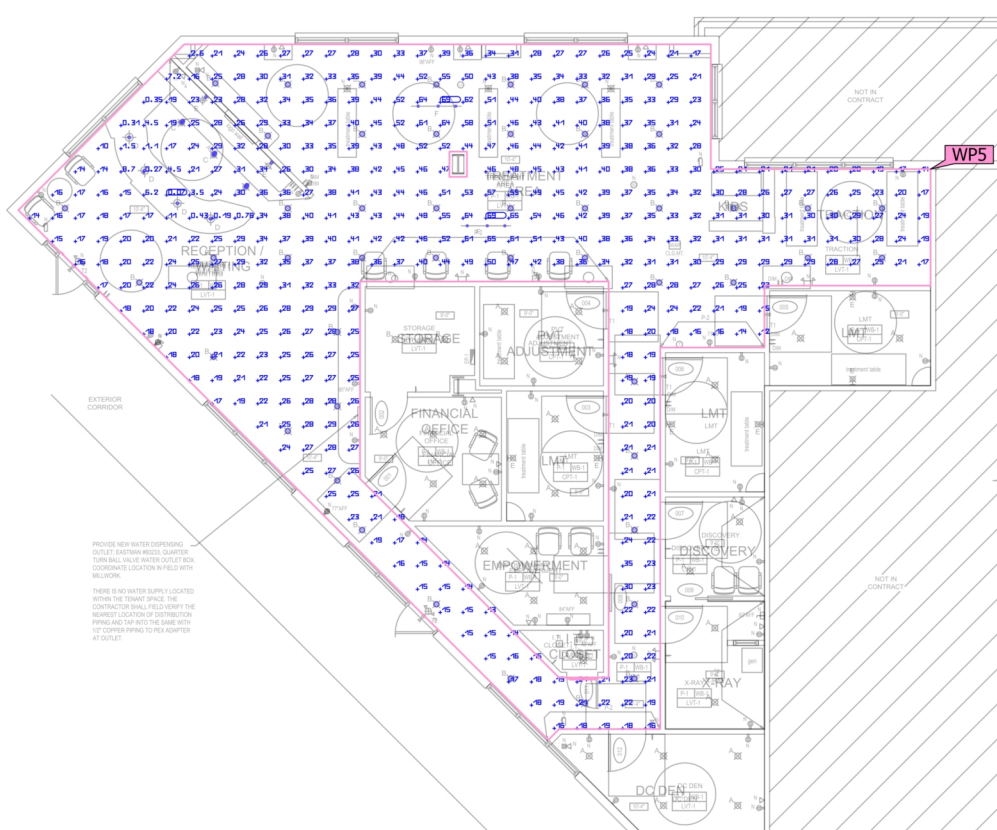
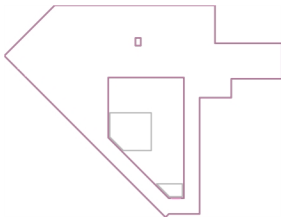
### Working plane (PVT Adjustment)



Properties	$\bar{E}$ (Target)	$E_{min}$	$E_{max}$	$\bar{E}/E_{min}$ (Target)	$E_{max}/E_{min}$	Index
Working plane (PVT Adjustment) Perpendicular illuminance (adaptive) Height: 2.493 ft, Wall zone: 0.000 ft	30.8 fc ( $\geq 27.9$ fc)	9.77 fc	36.6 fc	3.15 ( $\leq -$ )	3.74	WP7

Utilisation profile: DIALux preset (Default (Office))

Building 1 · Storey 1 · Reception - Treatment - Tranction (Light scene 1)  
**Working plane (Reception - Treatment - Tranction)**



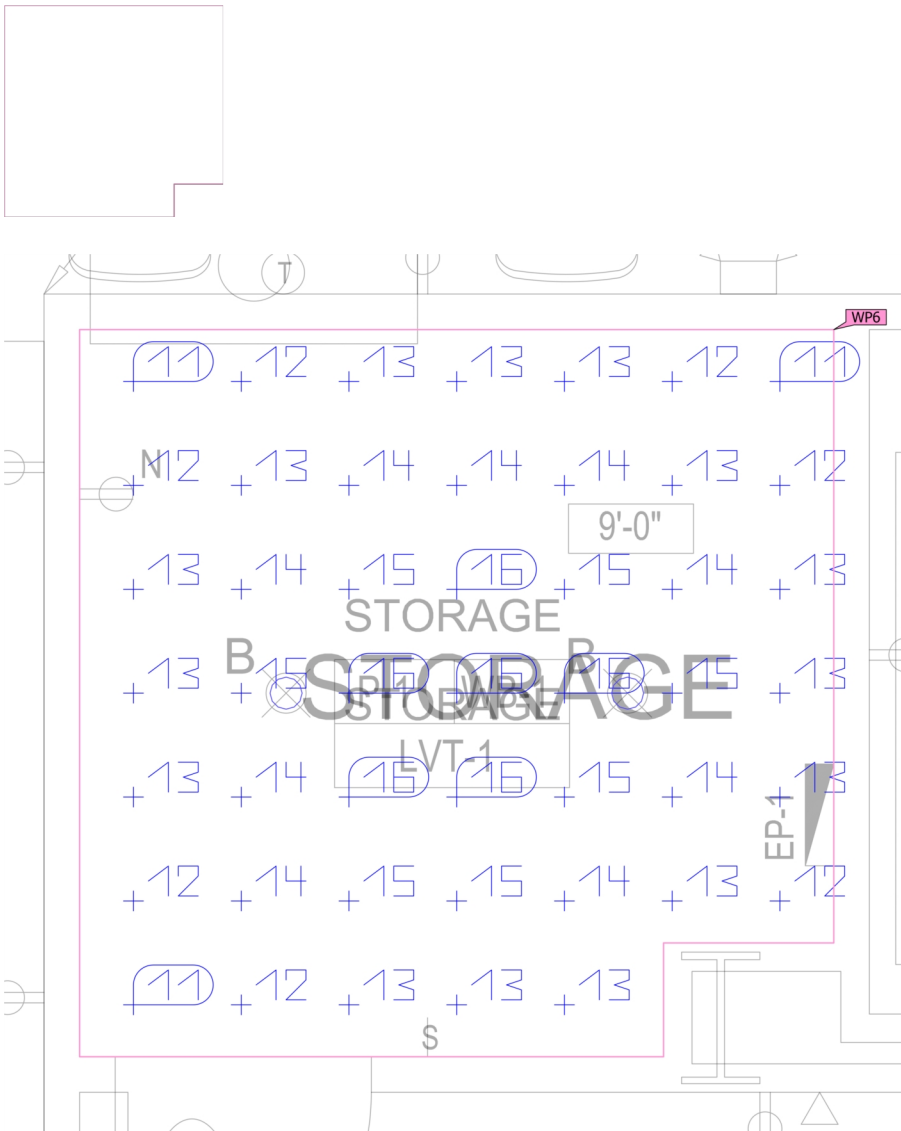
Properties	$\bar{E}$ (Target)	$E_{min}$	$E_{max}$	$\bar{E}/E_{min}$ (Target)	$E_{max}/E_{min}$	Index
Working plane (Reception - Treatment - Tranction)	28.8 fc	0.072 fc	70.0 fc	401	975	WP5
Perpendicular illuminance (adaptive)	≥ 27.9 fc			≤ -		
Height: 2.493 ft, Wall zone: 0.000 ft	✓			✓		

Utilisation profile: DIALux preset (Default (Office))



Building 1 · Storey 1 · Storage (Light scene 1)

### Working plane (Storage)



Properties	$\bar{E}$ (Target)	$E_{min}$	$E_{max}$	$\bar{E}/E_{min}$ (Target)	$E_{max}/E_{min}$	Index
Working plane (Storage) Perpendicular illuminance (adaptive) Height: 0.000 ft, Wall zone: 0.000 ft	13.7 fc ( $\geq 4.64$ fc)	10.5 fc	16.2 fc	1.30 ( $\leq 5.00$ )	1.53	WP6

Utilisation profile: 30 - LIGHTING FOR MANUFACTURING (Warehousing and Storage; Inactive)